



The Alumni Association ranks in the

Top 10

among the Power Five conferences for the percentage of graduates who are members.

No. 1

Affinity license plate in Kansas. The program has raised more than \$6 million for student scholarships and recognition programs since 1997



ALUMNI ASSOCIATION

2021 - 2022 ANNUAL REPORT

LEADING AND INSPIRING LIFELONG INVOLVEMENT FOR K-STATE



11,000

active license plates in Kansas, Texas and Maryland

9

Council for Advancement and Support of Education

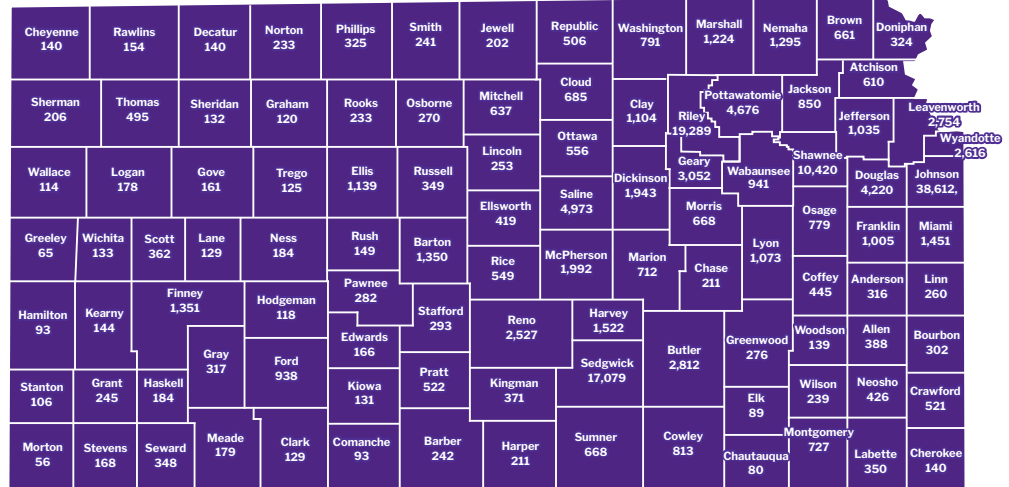
Awards

including

2

Circle of Excellence

K-STATE GRADUATES & FRIENDS IN KANSAS

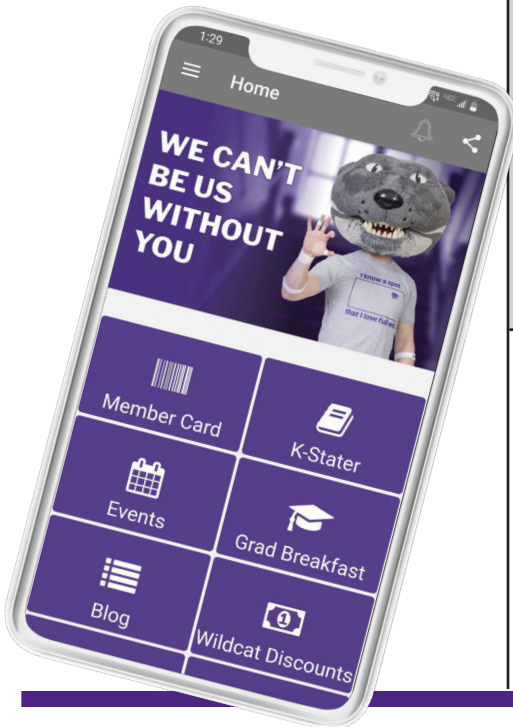


2022 TOTAL: 157,065

Connect with us

7,942 mobile app users

Download the app today to get exclusive notifications about Association events, read the news and access your digital membership card!



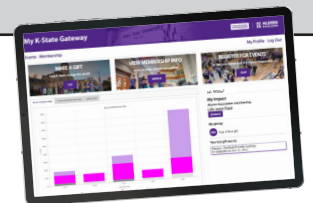
Linton tour:

7 days, 41 stops
Approx. 1,300 miles and 250 people reached

Our Social Media Followers



Facebook: 27,255
Twitter: 14,586
LinkedIn: 2,073
Instagram: 8,413



My K-State Gateway portal users:

1,381

44,178

attendees at 410 events in the K-State Alumni Center

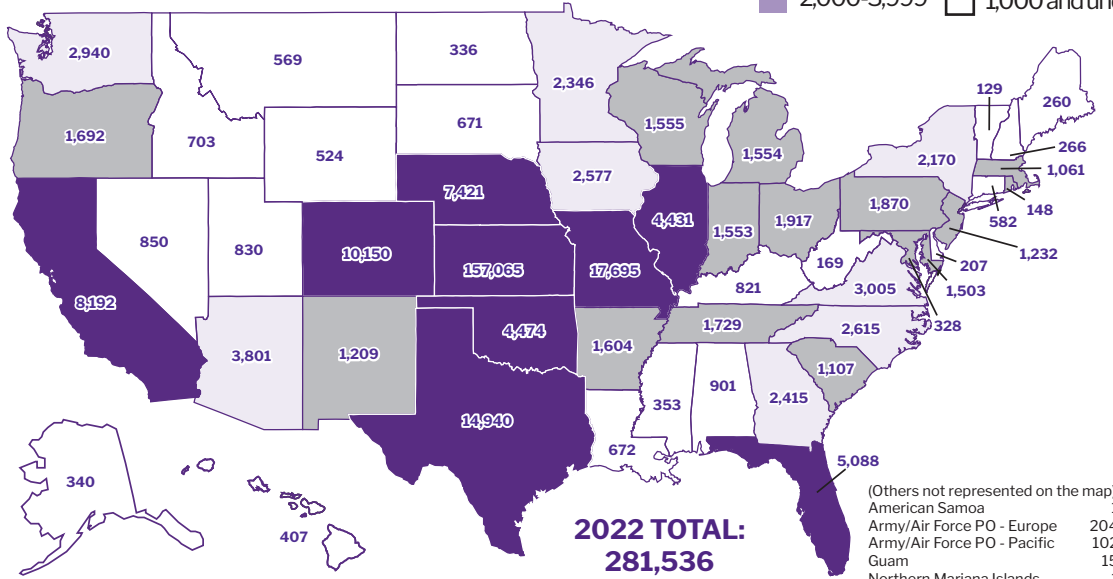
\$550,000

Awarded in scholarships to 500 students

3,257

donors support our annual fund, Tradition Founders, contributing \$676,978

K-STATE GRADUATES & FRIENDS IN U.S. TERRITORIES



(Others not represented on the map)

American Samoa	1
Army/Air Force PO - Europe	204
Army/Air Force PO - Pacific	102
Guam	15
Northern Mariana Islands	1
Puerto Rico	214
Virgin Islands	22

INTERNATIONAL K-STATE GRADUATES/FRIENDS

Afghanistan	18	Greece	22	Oman	6
Algeria	4	Grenada	1	Pakistan	98
Angola	2	Guatemala	18	Palau	2
Antigua and Barbuda	1	Guinea	4	Panama	21
Argentina	28	Haiti	1	Paraguay	144
Armenia	3	Honduras	42	Peru	15
Australia	122	Hong Kong	44	Philippines	75
Austria	7	Hungary	14	Poland	3
Azerbaijan	3	Iceland	3	Portugal	8
Bahamas	3	India	395	Qatar	19
Bahrain	7	Indonesia	67	Romania	3
Bangladesh	19	Iran (Islamic Republic Of)	49	Russian Federation	10
Barbados	6	Iraq	42	Rwanda	3
Belgium	13	Ireland	16	Saint Kitts and Nevis	2
Belize	4	Israel	26	Saudi Arabia	274
Benin	2	Italy	16	Senegal	11
Bermuda	3	Jamaica	3	Serbia	5
Bolivia	25	Japan	205	Seychelles	5
Bosnia and Herzegovina	1	Jordan	62	Sierra Leone	1
Botswana	26	Kazakhstan	8	Singapore	47
Brazil	65	Kenya	37	Slovakia	1
Brunei Darussalam	2	Korea, Republic of	269	Slovenia	4
Burundi	2	Kosovo	2	South Africa	38
Cambodia	1	Kuwait	93	Spain	22
Cameroon	4	Kyrgyzstan	2	Sri Lanka	33
Canada	454	Latvia	2	Sudan	29
Cayman Islands	2	Lebanon	17	Swaziland	4
Central African Republic	1	Lesotho	4	Sweden	24
Chile	7	Liberia	5	Switzerland	56
China	778	Libyan Arab Jamahiriya	11	Syrian Arab Republic	4
Colombia	52	Lithuania	2	Taiwan	240
Congo, The Democratic Republic	5	Macao	1	Tanzania, United Republic of	27
Costa Rica	85	Malawi	10	Thailand	144
Cote D'Ivoire	10	Malaysia	118	Togo	1
Croatia	3	Maldives	1	Trinidad and Tobago	6
Cyprus	10	Mali	10	Tunisia	8
Czech Republic	25	Mauritius	1	Turkey	68
Denmark	9	Mexico	70	Turks and Caicos Islands	1
Djibouti	1	Moldova, Republic of	1	Uganda	12
Dominican Republic	6	Mongolia	2	Ukraine	6
East Timor	1	Morocco	14	United Arab Emirates	53
Ecuador	207	Mozambique	3	United Kingdom	195
Egypt	64	Myanmar	1	Uruguay	8
El Salvador	3	Namibia	3	Uzbekistan	2
Estonia	1	Nepal	17	Venezuela	41
Ethiopia	17	Netherlands	30	Vietnam	8
Finland	10	Netherlands Antilles	3	Yemen	16
France	83	New Zealand	32	Zambia	9
Gaza Strip	1	Nicaragua	5	Zimbabwe	5
Georgia	2	Niger	10		
Germany	173	Nigeria	278		
Ghana	13	Norway	21		
				TOTAL	6,324

WHO BELONGS TO THE ALUMNI ASSOCIATION?

MEMBERSHIP AFFILIATION

Graduates	33,929
Students	375
Friends	3,349
Total member affiliation	37,653

MEMBERS BY LOCATION

Kansas	22,461
Out-of-state	14,851
International	169
Lost	172

MEMBERS BY DECADE (of first graduation)

1920s	4
1930s	4
1940s	131
1950s	1,327
1960s	3,692
1970s	6,551
1980s	5,097
1990s	5,207
2000s	3,997
2010s	3,061
2020s	4,858
Friends	3,349
Students	375

ALL LIVING K-STATE GRADUATES

Kansas	98,045
Out-of-state	95,806
International	5,417
No address	4,398
Total living graduates	203,666

37,653

members of the K-State Alumni Association

298

travelers on

32

Traveling Wildcats trips

124

Born to be a Wildcat members

1,071

Junior Wildcats Club members

100+

Alumni Clubs worldwide

FINANCIAL OVERVIEW

current assets

\$1,959,601

investments

\$17,513,678

building & land

\$7,120,310

other assets

\$91,254

total assets

\$26,684,843

current liabilities

\$688,104

other liabilities

\$813,513

total liabilities

\$1,501,617

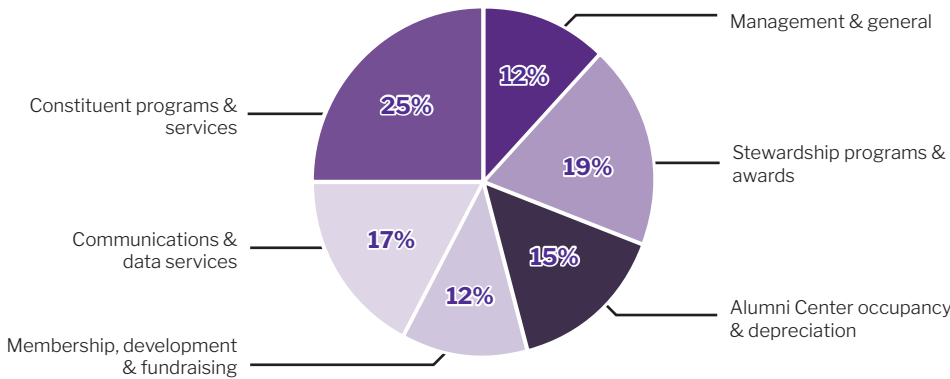
total net assets

\$25,183,226

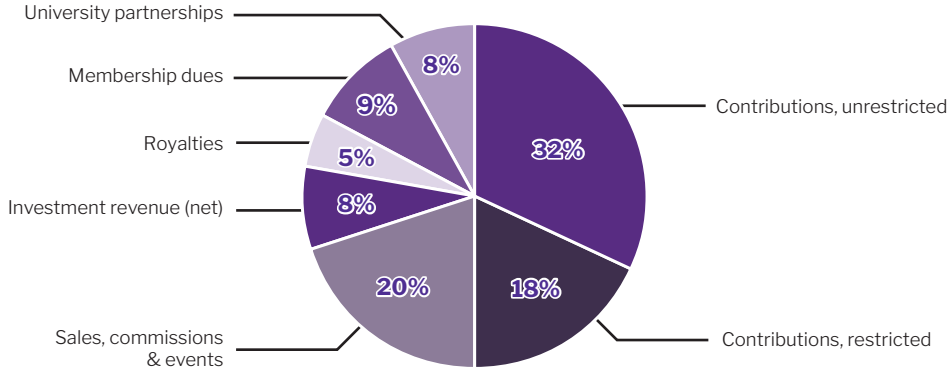
total unrestricted reserves

\$5,666,353

Expenses



Revenues



BOARD OF DIRECTORS

Candace Hart Duncan '75 - Chair
Bethesda, Md.

Tim Oswalt '93 - Chair-Elect
Oak Harbor, Wash.

Nabeeha Kazi Hutchins '96 - Past Chair
Washington, D.C.

Terms expire in 2023

Chancy Montera Love '07, Denver, Colo.

Rich Macha '80, Wilmington, Del.

Lori Francis Rogge '94, Leonardville, Kan.

Mike Simms '89, Kansas City, Mo.

Brent Wiedeman '97, '05, Colby, Kan.

Terms expire in 2024

Dr. Curt Coffman '90, Phoenix, Ariz.

Jeff Ellison '90, St. Joseph, Mo.

Jody Isch Lancaster '88, Ottawa, Kan.

Zach Maier '09, Lake Quivira, Kan.

Suze Brink Parker '81, '83, Overland Park, Kan.

Terms expire in 2025

Morgan Fisher '04, Doha, Qatar

Lydia Peele Kinkade '09, Overland Park, Kan.

Steve Lacy '76, '77, Des Moines, Iowa

John Niemann '93, Mount Hope, Kan.

Karen Wiley Works '76, Humboldt, Kan.

Terms expire in 2026

Link Evans '82, The Woodlands, Texas

Phil Kirk '89, Oak Grove, Mo.

Tonya Rudolph Barta '91, Holton, Kan.

Jill Stehley Harrison, Prairie Village, Kan.

Kelly Williams '03, Kansas City, Kan.

STANDING DIRECTORS

Richard Linton, Manhattan, Kan.,
K-State president

Mary Vanier '89, Manhattan, Kan., chair,
board of directors, KSU Foundation

Curt Frasier '73, Beloit, Kan., treasurer

Amy Button Renz '76, '86, Manhattan,
Kan., secretary

Parker Vulgamore, Scott City, Kan.,
student body president

Emily Howard, Eudora, Kan., Student
Alumni Board president

Greg Willems, Manhattan, Kan.,
ex officio member, president and
CEO, KSU Foundation